

## Hydraulic 316 Stainless Steel High Pressure 2 Way Ball Valves



Part Number: **RKH Series** - Full Bore

DN (mm)	Bore	Thread	BAR	Code BSP	Code NPT
6	6	1/4"	400	RKH 4423 G14	RKH 4423 N14
10	10	3/8"	400	RKH 4423 G38	RKH 4423 N38
13	13	1/2"	400	RKH 4423 G12	RKH 4423 N12
20	20	3/4"	400	RKH 4423 G34	RKH 4423 N34
25	24	1"	400	RKH 4423 G1	RKH 4423 N1
25	24	1 1/4"	400	RKH 4423 G5425	RKH 4423 N5425
25	24	1 1/2"	400	RKH 4423 G3525	RKH 4423 N3225
32	32	1 1/4"	350	RKH 4423 G5432	RKH 4423 N5432
40	38	1 1/2"	350	RKH 4423 G3240	RKH 4423 N3240
50	48	2"	350	RKH 4423 G2	RKH 4423 N2

### Technical Data

#### Materials

316 stainless steel  
Seals: DELRIN, BUNA

#### Operating Pressure

See table

#### Operating Temperature

-15°C - to +80°C

#### Special Requests

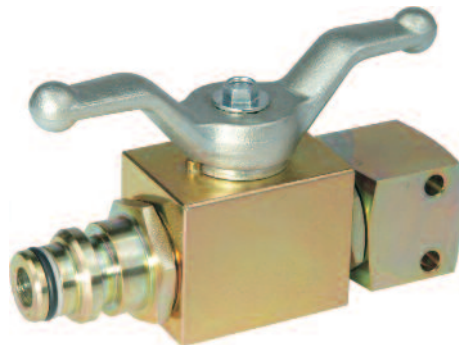
NPT and SAE threads DIN 2352 Light/Heavy connections available on request.  
For assistance, contact our technical office.

#### Special Notes

Valve numbers shown are for general hydraulic use, for other media and special requests please consult our technical office.

## Hydraulic Staple Lock 2 Way Ball Valves

Application: Hydraulic ball valves for use with staple lock connections.  
Used extensively in the mining industry.



Part Number: **BBKH Series**

DN (mm)	BAR	Female / Female		Male / Female	
		Part Number	Part Number	Part number	Part number
10	500	BBKH 1123 F/F DN10	BBKH 1123 F/F DN10	BBKH 1123 M/F DN10	BBKH 1123 M/F DN10
13	500	BBKH 1123 F/F DN13	BBKH 1123 F/F DN13	BBKH 1123 M/F DN13	BBKH 1123 M/F DN13
20	400	BBKH 1123 F/F DN20	BBKH 1123 F/F DN20	BBKH 1123 M/F DN20	BBKH 1123 M/F DN20
25	350	BBKH 1123 F/F DN25	BBKH 1123 F/F DN25	BBKH 1123 M/F DN25	BBKH 1123 M/F DN25

### Technical Data

#### Materials

BBKH series barstock carbon steel, black phosphated, Polyamide/BUNA seals as standard

#### Operating Pressure

See table

#### Safety Factor

1.5

#### Operating Temperature

-15°C - to +80°C

#### Additional Options

Zinc plated and yellow bichromated steel.  
Forged steel bodies, DELRIN/BUNA, VITON, EPDM and PTFE seals

#### Special Notes

Valve numbers shown are for general hydraulic use, for other media and special requests please consult our technical office.

## Hydraulic High Pressure 3 Way Ball Valves (for panel mount - threaded stem)

Application: These valves feature a thread stem to facilitate installation on panels. The valve lever is all that is visible.



Part Number: **VF3-CR** - 3-Way

DN	Thread	BAR	Stem Thread (mm)	Part Number
6	1/4"	500	26 x 1.5	<b>VF3-CR 1113 G14</b>
10	3/8"	500	32 x 1.5	<b>VF3-CR 1113 G38</b>
13	1/2"	500	32 x 1.5	<b>VF3-CR 1113 G12</b>
20	3/4"	400	45 x 1.5	<b>VF3-CR 1113 G34</b>
25	1"	350	45 x 1.5	<b>VF3-CR 1113 G1</b>

Please Note: Pressure connection must always be through centre port

### Technical Data

#### Materials

Carbon steel, yellow passivated  
Seals: Polyamide/BUNA  
Ball Seat: Delrin  
Ball: Carbon Steel, Nickel Plated

#### Operating Pressure

See table

#### Operating Temperature

-15°C - to +80°C

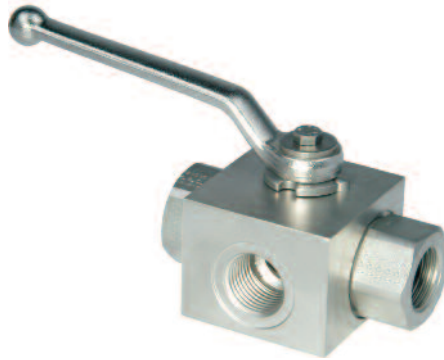
#### Special Requests

NPT and SAE threads available on request.  
For assistance, contact our technical office.

#### Special Notes

Valve numbers shown are for general hydraulic use, for other media and special requests please consult our technical office.

## Hydraulic 316 Stainless Steel High Pressure 3 Way Ball Valves



Part Number: **RK3 Series**

DN	Bore	Thread	BAR	Part Number
06	6	1/4"	400	<b>RK3 4423 G14</b>
10	9	3/8"	400	<b>RK3 4423 G38</b>
13	12	1/2"	400	<b>RK3 4423 G12</b>
20	18	3/4"	320	<b>RK3 4423 G34</b>
25	22	1"	350	<b>RK3 4423 G1</b>
25	22	1 1/4"	350	<b>RK3 4423 G5425</b>

### Technical Data

#### Materials

316 stainless steel  
Seals: DELRIN, BUNA

#### Operating Pressure

See table

#### Operating Temperature

-15°C - to +80°C

#### Special Requests

NPT DIN 2353 Light/Heavy connections available on request.

For assistance, contact our technical office.

## Lever Options

