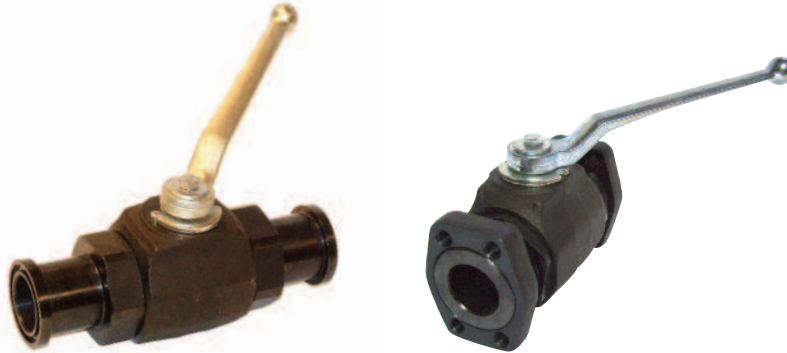


Hydraulic 2 Way Ball Valves with SAE Flanges

Application: Hydraulics, ship building and engineering using either full or split SAE flanges.



Split Flange

DN (mm)	Bore	BAR	Part Number	Part number
13	1/2"	420	BKH 1123 3000S-12	BKH 1123 6000S-12
20	3/4"	420	BKH 1123 3000S-34	BKH 1123 6000S-34
25	1"	420	BKH 1123 3000S-1	BKH 1123 6000S-1
32	1 1/4"	420	SKH 3123 3000S-114	SKH 1123 6000S-114
40	1 1/2"	350	SKH 3123 3000S-112	SKH 1123 6000S-112
50	2"	350	SKH 3123 3000S-2	SKH 1123 6000S-2

Full Flange

DN (mm)	Bore	BAR	Part Number	Part number
13	1/2"	420	BKH 1123 3000-12	BKH 1123 6000-12
20	3/4"	420	BKH 1123 3000-34	BKH 1123 6000-34
25	1"	420	BKH 1123 3000-1	BKH 1123 6000-1
32	1 1/4"	420	SKH 3123 3000-114	SKH 3123 6000-114
40	1 1/2"	350	SKH 3123 3000-112	SKH 3123 6000-112
50	2"	350	SKH 3123 3000-2	SKH 3123 6000-2
65/50	2 1/2" - 2"	350	SKH 3123 3000-212	

*Trunnion Mounted

Technical Data

Materials

BKH series barstock carbon steel, black phosphated, Polyamide/BUNA seals as standard

SKH series forged steel, black phosphated, Polyamide/BUNA seals as standard

Operating Pressure

See table

Safety Factor

1.5

Operating Temperature

-15°C - to +80°C

Additional Options

Zinc plated and yellow bichromated steel.

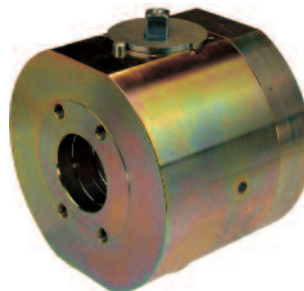
Forged steel bodies, DELRIN/BUNA, VITON, EPDM and PTFE seals

Special Notes

Valve numbers shown are for general hydraulic use, for other media and special requests please consult our technical office.

Hydraulic Wafer Ball Valve SAE Flanges

Application: ?



Part Number: **SAE 3000 ISO6162**
and **SAE 6000 ISO6162**

DN (mm)	Bore	SAE 3000		Part Number	Part Number
		PN	PN		
25	24	315	400	FCKH DN25 3923 SAE 3000	FCKH DN25 3923 SAE 3000
32	32	250	400	FCKH DN32 3923 SAE 3000	FCKH DN32 3923 SAE 3000
40	38	200	400	FCKH DN40 3923 SAE 3000	FCKH DN40 3923 SAE 3000
50	47.5	200	400	FCKH DN50 3923 SAE 3000	FCKH DN50 3923 SAE 3000
65	63	160	320	FCKH DN65 3923 SAE 3000	FCKH DN65 3923 SAE 3000
80	76	100	320	FCKH DN80 3923 SAE 3000	FCKH DN80 3923 SAE 3000
100	100	25	-	FCKH DN100 3923 SAE 3000	-
125	120	25	-	FCKH DN125 3923 SAE 3000	-

Technical Data

Materials

?

?

Operating Pressure

See table

Operating Temperature

?

Special Notes

Valve numbers shown are for general hydraulic use, for other media and special requests please consult our technical office.