

## Hydraulic Flow Control & Needle Valves

Connections: 1/8 - 1 1/2 BSP

Inline needle valves with micrometer scale



### Technical Data

#### Materials

DV/DRV: Carbon steel, Nitrile seals  
 FT: Nickel plated brass (stainless steel where stated), Nitrile seals

#### Operating Pressure

DV/DRV: 350 BAR  
 FT: 210 BAR

#### Operating Temperature

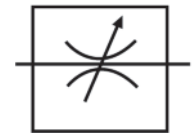
-20°C - to +100°C

#### Special Requests

For assistance, contact our technical office.

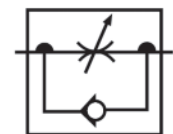
DV series double acting flow control (bi-directional) with shut off

BSP	BAR	LPM MAX	Part Number
1/8"	350	10	DV-G18
1/4"	350	50	DV-G14
3/8"	350	75	DV-G38
1/2"	350	140	DV-G12
3/4"	350	175	DV-G34
1"	350	350	DV-G100
1 1/4"	350	350	DV-G114
1 1/2"	350	350	DV-G112



DR series single acting flow control, free reverse flow (uni-directional)

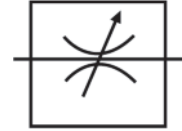
BSP	BAR	LPM MAX	Part Number
1/8"	350	10	DRV-G18
1/4"	350	50	DRV-G14
3/8"	350	75	DRV-G38
1/2"	350	140	DRV-G12
3/4"	350	175	DRV-G34
1"	350	350	DRV-G100
1 1/4"	350	350	DRV-G114
1 1/2"	350	350	DRV-G112
2"	350	350	DRV-G200



## Flow Control &amp; Needle Valves

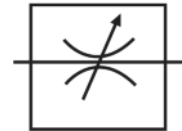
## Inline Shut-off valve handwheel operation (bi-directional)

BSP	BAR	LPM	Part Number
1/8"	400	5	FT 257/1-18
1/4"	400	15	FT 257/1-14
3/8"	400	50	FT 257/1-38
1/2"	400	60	FT 257/1-12
3/4"	400	90	FT 257/1-34
1"	320	200	FT 257/1-1
1 1/4"	320	220	FT 257/1-114
1 1/2"	320	220	FT 257/1-112
2"	320	220	FT 257/1-2



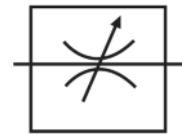
## Angle shut-off handwheel operation (bi-directional)

BSP	BAR	LPM	Part Number
1/4"	400	15	FT 258/1-14
3/8"	400	50	FT 258/1-38
1/2"	400	60	FT 258/1-12
3/4"	400	90	FT 258/1-34



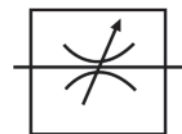
## Inline double acting flow control, micrometer style operation (bi-directional)

BSP	BAR	LPM	Part Number
1/8"	400	5	FT 257/2-18
1/4"	400	15	FT 257/2-14
3/8"	400	50	FT 257/2-38
1/2"	400	60	FT 257/2-12
3/4"	400	90	FT 257/2-34
1"	320	200	FT 257/2-1
1 1/4"	320	220	FT 257/2-114
1 1/2"	320	220	FT 257/2-112
2"	320	220	FT 257/2-2



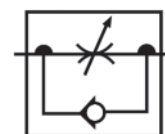
## Angle double acting flow control, micrometer style operation (bi-directional)

BSP	BAR	LPM	Part Number
1/4"	400	15	FT 258/2-14
3/8"	400	50	FT 258/2-38
1/2"	400	60	FT 258/2-12
3/4"	400	90	FT 258/2-34



## Single acting flow control, free reverse flow (uni-directional)

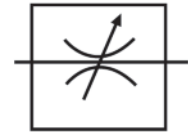
BSP	BAR	LPM	Part Number
1/8"	400	5	FT 257/5-18
1/4"	400	15	FT 257/5-14
3/8"	400	50	FT 257/5-38
1/2"	400	60	FT 257/5-12
3/4"	400	90	FT 257/5-34
1"	320	200	FT 257/5-1
1 1/4"	320	220	FT 257/5-114
1 1/2"	320	220	FT 257/5-112
2"	320	220	FT 257/5-2



**Flow Control & Needle Valves**

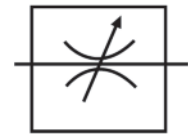
Inline double acting flow control, micrometer style operation (bi-directional) fine flow control

BSP	BAR	LPM	Part Number
1/8"	210	0-3 fine control	FT 1237/2-18



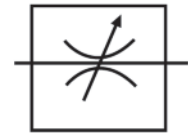
Inline double acting flow control, micrometer style operation (bi-directional)

BSP	BAR	LPM	Part Number
1/8"	210	10	FT 1251/2-18
1/4"	210	20	FT 1251/2-14
3/8"	210	30	FT 1251/2-38
1/2"	210	60	FT 1251/2-12
3/4"	210	80	FT 1251/2-34



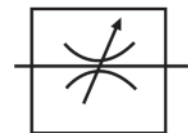
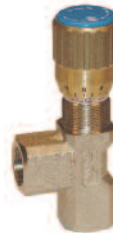
Inline double acting flow control, micrometer style operation (bi-directional) - Stainless Steel

BSP	BAR	LPM	Part Number
1/4"	210	20	FT 2251/2-14
3/8"	210	30	FT 2251/2-38
1/2"	210	60	FT 2251/2-12
3/4"	210	80	FT 2251/2-34



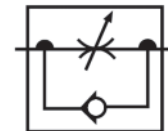
Angle double acting flow control, micrometer style operation (bi-directional)

BSP	BAR	LPM	Part Number
1/8"	210	10	FT 1252/2-18
1/4"	210	20	FT 1252/2-14
3/8"	210	30	FT 1252/2-38
1/2"	210	60	FT 1252/2-12



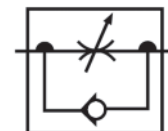
Inline single acting flow control, free reverse flow micrometer style operation (uni-directional) fine flow control

BSP	BAR	LPM	Part Number
1/8"	210	0-3 fine control	FT 1237/5-18



Inline single acting flow control, free reverse flow micrometer style operation (uni-directional)

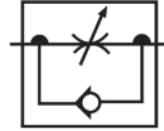
BSP	BAR	LPM	Part Number
1/4"	210	20	FT 1251/5-14
3/8"	210	30	FT 1251/5-38
1/2"	210	60	FT 1251/5-12
3/4"	210	80	FT 1251/5-34



### Flow Control & Needle Valves

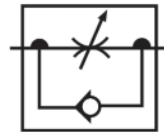
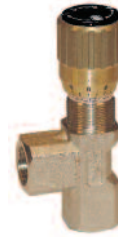
Inline single acting flow control, free reverse flow micrometer style operation (uni-directional)

BSP	BAR	LPM	Part Number
1/8"	210	10	FT 1253/5-18
1/4"	210	20	FT 1253/5-14
3/8"	210	30	FT 1253/5-38
1/2"	210	60	FT 1253/5-12
3/4"	210	80	FT 1253/5-34



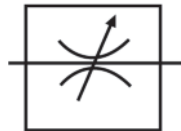
Angle single acting flow control, free reverse flow micrometer style operation (uni-directional)

BSP	BAR	LPM	Part Number
1/8"	210	10	FT 1254/5-18
1/4"	210	20	FT 1254/5-14
3/8"	210	30	FT 1254/5-38
1/2"	210	60	FT 1254/5-12



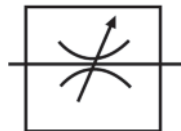
Shut-off Isolation cartridge valve handwheel operation

BSP	BAR	LPM	Part Number
1/8"	320	15	FT 267/1-18
1/4"	320	15	FT 267/1-14
3/8"	320	30	FT 267/1-38
1/2"	320	50	FT 267/1-12
3/4"	320	80	FT 267/1-34
1"	320	200	FT 267/1-1



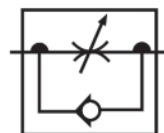
Shut-off Isolation cartridge valve micrometer style operation

BSP	BAR	LPM	Part Number
1/8"	320	15	FT 267/2-18
1/4"	320	15	FT 267/2-14
3/8"	320	30	FT 267/2-38
1/2"	320	50	FT 267/2-12
3/4"	320	80	FT 267/2-34
1"	320	200	FT 267/2-1



Single acting flow control cartridge valve, micrometer style operation

BSP	BAR	LPM	Part Number
1/8"	320	15	FT 267/5-18
1/4"	320	15	FT 267/5-14
3/8"	320	30	FT 267/5-38
1/2"	320	50	FT 267/5-12
3/4"	320	80	FT 267/5-34
1"	320	200	FT 267/5-1



Non return cartridge valve

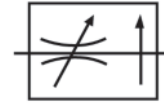
BSP	BAR	LPM	Part Number
1/4"	320	15	FT 267/6-14
3/8"	320	30	FT 267/6-38
1/2"	320	50	FT 267/6-12



**Flow Control & Needle Valves**

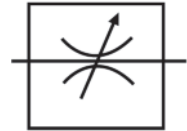
Flow control and shut-off pressure compensated cartridge valve, micrometer style operation

BSP	BAR	LPM	Part Number
1/4"	210	15	FT 287/2-14
3/8"	210	30	FT 287/2-38
1/2"	210	55	FT 287/2-12
3/4"	210	90	FT 287/2-34



Double acting flow control, micrometer style operation (bi-directional) - Brass

BSP	BAR	LPM (Fine Control)	Part Number
1/8"	210	0-2	FT 1247/2-18



Pressure compensated flow control and shut off valve (bi-directional)

BSP	BAR	LPM	Part Number	Flow control & Shut-off
1/4"	210	12	FT 270/2-14	
3/8"	210	25	FT 270/2-38	
1/2"	210	50	FT 270/2-12	
3/4"	210	80	FT 270/2-34	
1"	210	135	FT 270/2-1	



Pressure compensated single acting flow control (uni-directional)

BSP	BAR	LPM	Part Number	Single Acting Flow Control
1/4"	210	12	FT 270/5-14	
3/8"	210	25	FT 270/5-38	
1/2"	210	50	FT 270/5-12	
3/4"	210	80	FT 270/5-34	
1"	210	135	FT 270/5-1	



Pressure compensated flow control and shut off valve (bi-directional)

BSP	BAR	LPM	Part Number
1/4"	320	15	FT 277/2-14
3/8"	320	30	FT 277/2-38
1/2"	320	55	FT 277/2-12
3/4"	320	75	FT 277/2-34



Pressure compensated single acting flow control (uni-directional)

BSP	BAR	LPM	Part Number
1/4"	320	15	FT 277/5-14
3/8"	320	30	FT 277/5-38
1/2"	320	55	FT 277/5-12
3/4"	320	75	FT 277/5-34



Push button gauge isolator

BSP	BAR	LPM	Part Number
1/4"	400	-	FT 292-14

